



# 8 TO 12 MONTHS

---

Your baby is developing skills like problem solving, investigating and experimenting. It is important to encourage your baby's learning by providing opportunities that challenge, intrigue and surprise them.

Developmental milestones you may observe:



## EMOTIONAL

- Actively seeks to be near parent
- Shows signs of stress if parent goes away
- Shows signs of empathy to distress of others

## COGNITIVE

- Understands some gestures and things you do or say
- Moves obstacle to get a desired toy

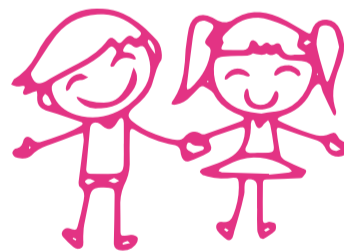


## LANGUAGE

- Responds to own name
- Shouts to attract attention
- Imitates actions and sounds

## SOCIAL

- Shows wariness of strangers



## PHYSICAL

- Transfers objects from hand to hand
- Crawls quickly and smoothly
- Sits without support

---

To find quality approved early education and care in Australia visit  
[www.startingblocks.gov.au/findchildcare](http://www.startingblocks.gov.au/findchildcare)

---